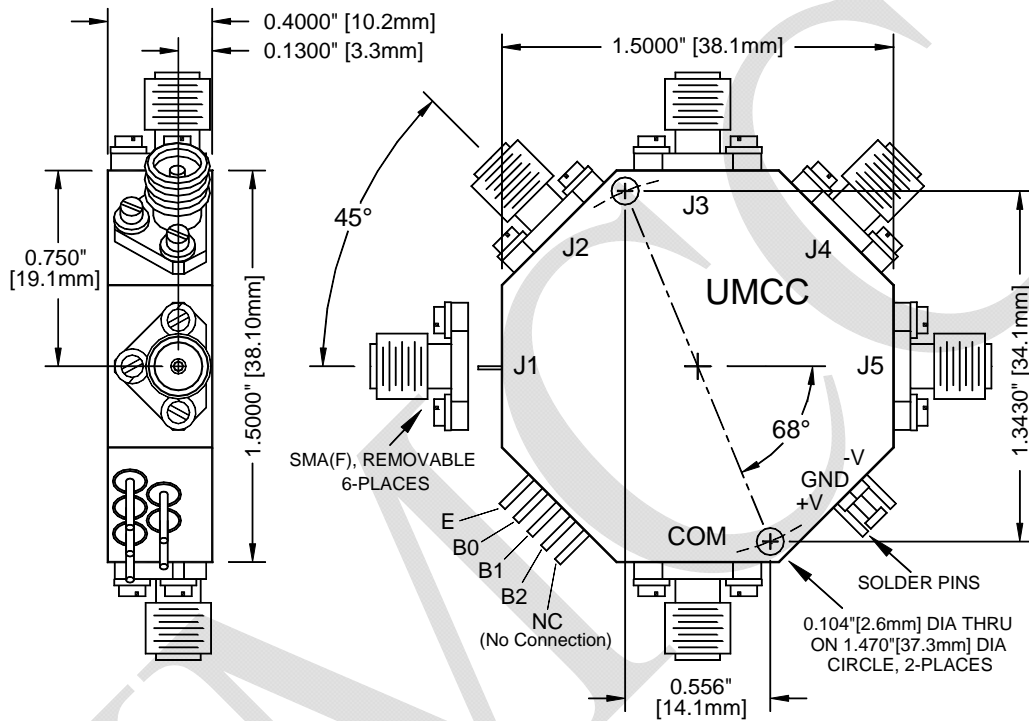




SW-XXXX-5S-F2 (Option with 3-Bit Binary Decoder)

Outline Drawing (SP5T Radial with Option "F2")

Fig. 3



| Weight | Tolerances |
|----------------|-------------------|
| 1.3 oz [36.9g] | ±0.015" [±0.38mm] |

Function Table for Option "F2" (3-Bit Binary Control + Enable)

| INPUTS | | | | RF PATH | | | | |
|--------|----|----|----|---------|-----|-----|-----|-----|
| E | B2 | B1 | B0 | J1 | J2 | J3 | J4 | J5 |
| 1 | 0 | 0 | 0 | ON | OFF | OFF | OFF | OFF |
| 1 | 0 | 0 | 1 | OFF | ON | OFF | OFF | OFF |
| 1 | 0 | 1 | 0 | OFF | OFF | ON | OFF | OFF |
| 1 | 0 | 1 | 1 | OFF | OFF | OFF | ON | OFF |
| 1 | 1 | 0 | 0 | OFF | OFF | OFF | OFF | ON |
| 0 | X | X | X | OFF | OFF | OFF | OFF | OFF |