



Model: PD-0500-5B

Description:..... 5-Way Power Divider

Operating Frequency:..... 10-500 MHz

Insertion Loss / Amplitude Balance / Phase Balance:

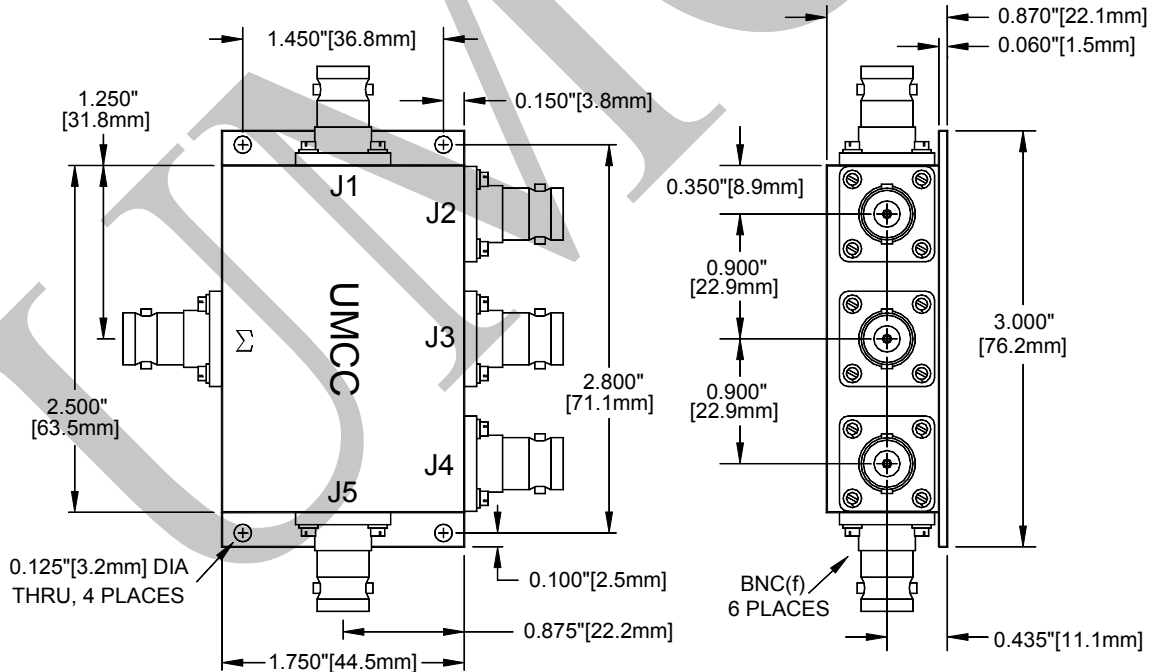
Frequency	Insertion Loss	Ampl. Bal	Phase Bal.
10-250 MHz	0.8 dB Max	±0.15 dB Max	±4° Max
250-500 MHz	1.4 dB Max	±0.35 dB Max	±7° Max

Isolation: 20 dB Min
 VSWR: Σ Port 1.60:1 Max
 Outputs 1.50:1 Max
 Power Handling (@ SUM-Port): Load VSWR=∞ 2W AVG/CW Max
 Load VSWR <2:1 8W AVG/CW Max
 Connectors: BNC (f)
 Impedance: 50 Ohms Nominal
 Quality: Best-Commercial-Grade

Environmental Ratings:

Temperature:..... {Operating: -55°C to +95°C} & {Storage: -60°C to +110°C}
 Humidity: MIL-STD-202F, Method 103B, Cond. B (96 hours at 95% R.H.)
 Shock: MIL-STD-202F, Method 213B, Cond. B (75G, 6mSec)
 Vibration: MIL-STD-202F, Method 204D, Cond. B (.06" double amplitude, or 15G)
 Altitude: MIL-STD-202F, Method 105C, Cond. B (50,000 Feet)
 Temp. Shock: MIL-STD-202F, Method 107D, Cond. A (5 cycles)

Outline



Weight	Tolerances
	± 0.015" [± 0.38 mm]